



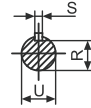
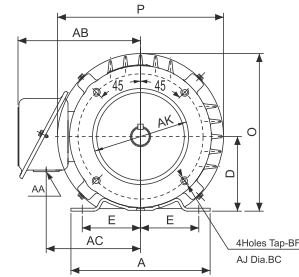
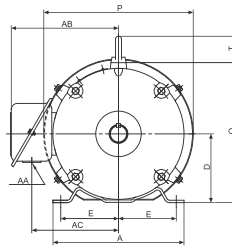
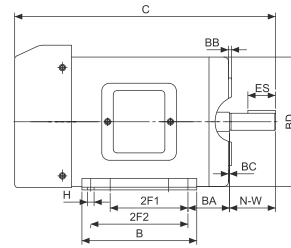
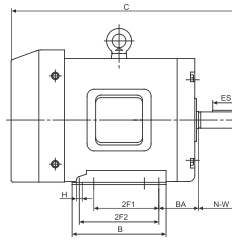
# NEMA series Fractional HP Three-Phase TEFC Electric Motors

## Features

- 208-230/460V/60Hz or 575V/60Hz
- NEMA Service Factor 1.15
- Continuous Duty 40°C Ambient
- TEFC (Totally Enclosed Fan Cooled)
- Class F Insulation With Class B Temp Rise
- Aluminum Alloy Frame / Cast Iron Frames
- NEMA Design B or C
- Ball Bearings
- IP55 Protection
- Stainless Steel Nameplate

## Applications

- Pumps
- Compressors
- Fans
- Conveyors
- Machine Tools
- Three Phase or Other General Purpose Applications



## Overall Installation Dimension

Frame	General													Shaft				C-FACE								
	A	B	C	D	H	BA	E	2F1	2F2	AA	AB	AC	T	O	P	N-W	U	S	R	ES	BC	BB	BD	AJ	AK	Tap-BF
48	5.75	4.00	11.05	3.00	0.34slot	2.50	2.12	2.75	-	0.88	5.15	4.00	-	6.00	6.40	1.50	0.500	Flat	0.453	-	-0.19	0.16	5.625	3.75	3	1/4-20
56	6.50	4.15	12.25	3.50	0.34slot	2.75	2.44	3.00	-	0.88	5.65	4.45	-	7.10	7.20	1.88	0.625	0.188	0.517	1.41	-0.19	0.16	6.45	5.875	4.5	3/8-16
56H	6.50	6.00	13.75	3.50	0.34slot	2.75	2.44	3.00	5.00	0.88	5.65	4.45	-	7.10	7.20	1.88	0.625	0.188	0.517	1.41	-0.19	0.16	6.45	5.875	4.5	3/8-16

## NEMA series Fractional HP Three-Phase TEFC Electric Motors

HP	Speed (r/min)	NEMA Frame	Conn	Code	Full Load Data			Locked Rotor Current at 460V (A)	Tst/Tn(%)	Tmax/Tn(%)
					Torque LB-FT	Eff (%)	Current 460V (A)			
1/4	3430	48	2Y/Y	T	0.4	66.0	0.6	6.0	230	250
1/4	1740	48	2Y/Y	T	0.8	64.0	0.7	6.0	275	300
1/4	3430	56	2Y/Y	T	0.4	69.0	0.6	6.0	230	250
1/4	1740	56	2Y/Y	T	0.8	64.0	0.7	6.0	275	300
1/4	1140	56	2Y/Y	T	1.2	59.0	1.1	6.0	200	275
1/3	3430	48	2Y/Y	T	0.5	69.0	0.7	8.0	230	250
1/3	1740	48	2Y/Y	T	1.0	67.0	0.8	8.0	275	300
1/3	3430	56	2Y/Y	T	0.5	72.0	0.7	8.0	230	250
1/3	1740	56	2Y/Y	T	1.0	67.0	0.8	8.0	275	300
1/3	1145	56	2Y/Y	T	1.6	63.0	1.2	8.0	200	275
1/2	3440	48	2Y/Y	R	0.8	72.0	1.1	10.0	185	250
1/2	1745	48	2Y/Y	R	1.6	70.0	1.2	10.0	275	300
1/2	3440	56	2Y/Y	R	0.8	74.0	1.1	10.0	185	250
1/2	1745	56	2Y/Y	R	1.6	70.0	1.2	10.0	275	300
1/2	1145	56	2Y/Y	R	2.3	68.0	1.3	10.0	200	275
3/4	3450	48	2Y/Y	P	1.2	75.0	1.3	12.5	185	250
3/4	1745	48	2Y/Y	P	2.3	74.0	1.4	12.5	275	300
3/4	3450	56	2Y/Y	P	1.2	75.0	1.3	12.5	185	250
3/4	1745	56	2Y/Y	P	2.3	74.0	1.4	12.5	275	300
3/4	1150	56	2Y/Y	P	3.4	71.0	1.6	12.5	175	275
1	3500	56H	2Y/Y	N	1.5	75.5	1.5	15.0	180	250
1	1745	56H	2Y/Y	N	3.0	82.5	1.6	15.0	275	300
1	1150	56H	2Y/Y	N	4.6	80.0	1.9	15.0	170	265
1	3500	143T	2Y/Y	N	1.5	75.5	1.5	15.0	180	250
1	1745	143T	2Y/Y	N	3.0	82.5	1.6	15.0	275	300
1	1150	145T	2Y/Y	N	4.6	80.0	1.9	15.0	170	265
1.5	3500	56H	2Y/Y	M	2.2	82.5	2.0	20.0	175	250
1.5	1745	56H	2Y/Y	M	4.5	84.0	2.3	20.0	250	280
1.5	3500	143T	2Y/Y	M	2.2	82.5	2.0	20.0	175	250
1.5	1745	145T	2Y/Y	M	4.5	84.0	2.3	20.0	250	280
1.5	1150	182T	2Y/Y	M	6.9	85.5	2.5	20.0	165	250
2	3500	56H	2Y/Y	L	3.0	84.0	2.7	25.0	170	240
2	1745	56H	2Y/Y	L	6.0	84.0	3.0	25.0	235	270
2	3500	145T	2Y/Y	L	3.0	84.0	2.7	25.0	170	240
2	1745	145T	2Y/Y	L	6.0	84.0	3.0	25.0	235	270
2	1150	184T	2Y/Y	L	9.3	86.5	3.2	25.0	160	240